

# **Performance Hoist**

## **PH8S 4-POST SPECIFICATION SHEET**



With an 8,000 lb capacity this our most compact 4 post lift. It's suitable for all cars and small pickups.

Convenient for multipurpose storage (vehicles, motorcycles, ATVs, yard equipment, storage totes) or for safe accessibility when working on your vehicles.

The ladder lock style column provides safety, the ability to adjust lock heights, and therefore runway height and leveling for floor slope.

Greaseable zerco fittings standard on all pulleys.

### **Comes standard with:**

- Polyurethane wheel castors that roll easily and without damage to epoxy floors
- Drip trays (6) provide coverage the full length of the lift
- Drive-on approach ramps that have a protective edge that won't scratch your garage floor
- Sliding, heavy duty tool/jack tray, convenient for vehicle maintenance
- Rubber wedge wheel stoppers
- Parking runways and cross beams are reinforced with welded-on steel doubling to prevent deflection
- Anchor bolts, in case you choose to bolt the lift down, but not required
- Drop-in front and rear wheel stops on runways

### **Options:**

- Aluminum Drive-on approach ramps
- Aluminum fillers to create a platform between runways
- 3,500 lb capacity hydraulic, sliding bridge jack

### **Specifications:**

Lifting Capacity	8,000 lbs
Power unit electrical requirements (110v w/ 20 amp breaker.	110v
Lifting time	50 secs
Shipping weight	1,720 lbs
Lifting height in top position (to top of runway)	72 ½"
Clearance under lift in top lock position (bottom of runway)	68"
Length of runway	165" (13 ¾')
Length of approach ramp	37"
Height of columns (overall height)	81 ¾" (6'9 ¾")
Size of columns	6"x3 ½"
Runway width	18 ¾"
Width between runways	37 ½"
Measurement to the outside of both runways	75"
Clearance between columns	93"
Overall width (with motor)	112 ¾"
Overall width (without motor)	102 ½"
Lock height options (clearance under runway) 20" 26" 32" 38" 44" 50" 56" 62" 68"	



Welded on Steel doubling for extra strength



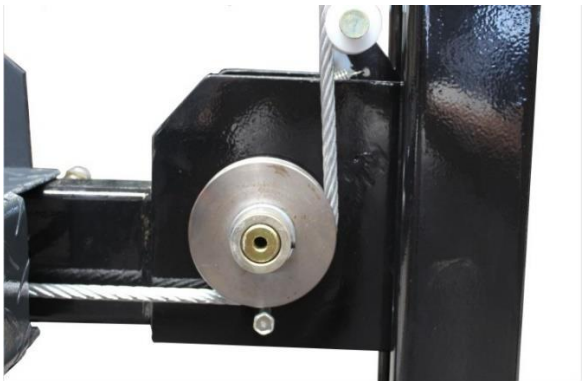
Heavy Duty Release Mechanism and Runway stoppers



Drip Trays x 6



Tool/Jack tray



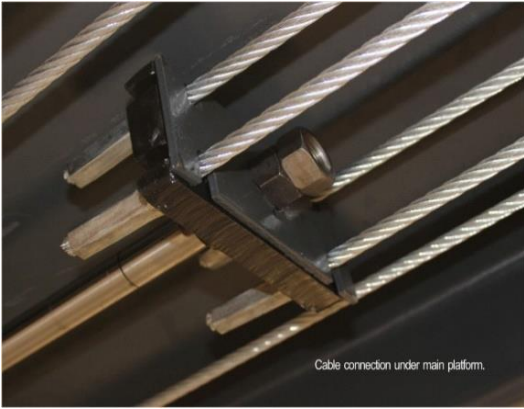
Pulleys and Cables



Wheel Castor kit



Anchor Bolts



Connections under runway



Cylinder with explosion-proof valve