

Performance Hoist

PH 11W 4 POST DOUBLEWIDE



Maximize your garage space by transforming a 2 car garage into a 4 car garage. The 4 reinforced, high strength runways lift up to make room for 2 more vehicles below. Or place fillers between the runways and use the upper level for storage or a hobby area that you lower when you wish to use it, then lift it away when you're done.

Convenient for safe, accessibility when doing maintenance on your vehicles.

The ladder lock style column provides safety and the ability to adjust lock heights, and therefore runway height and leveling for floor slope.

Greaseable zerco fittings standard on all pulleys.

Comes Standard with:

- Heavy duty wheel castor set that rolls the lift easily around. The only brand on the market with this feature
- Drip trays (8)
- Extra long (48") drive-on approach ramps that have a protective edge that won't scratch your garage floor. These longer ramps allow low clearance vehicles easier access
- Sliding, heavy duty tool/jack tray, convenient for vehicle maintenance
- Rubber wedge wheel stoppers
- Parking runways and cross beams are reinforced with welded-on steel doubling to prevent deflection
- Anchor bolts, in case you choose to bolt the lift down, but not required
- Drop-in front and rear wheel stoppers on runways

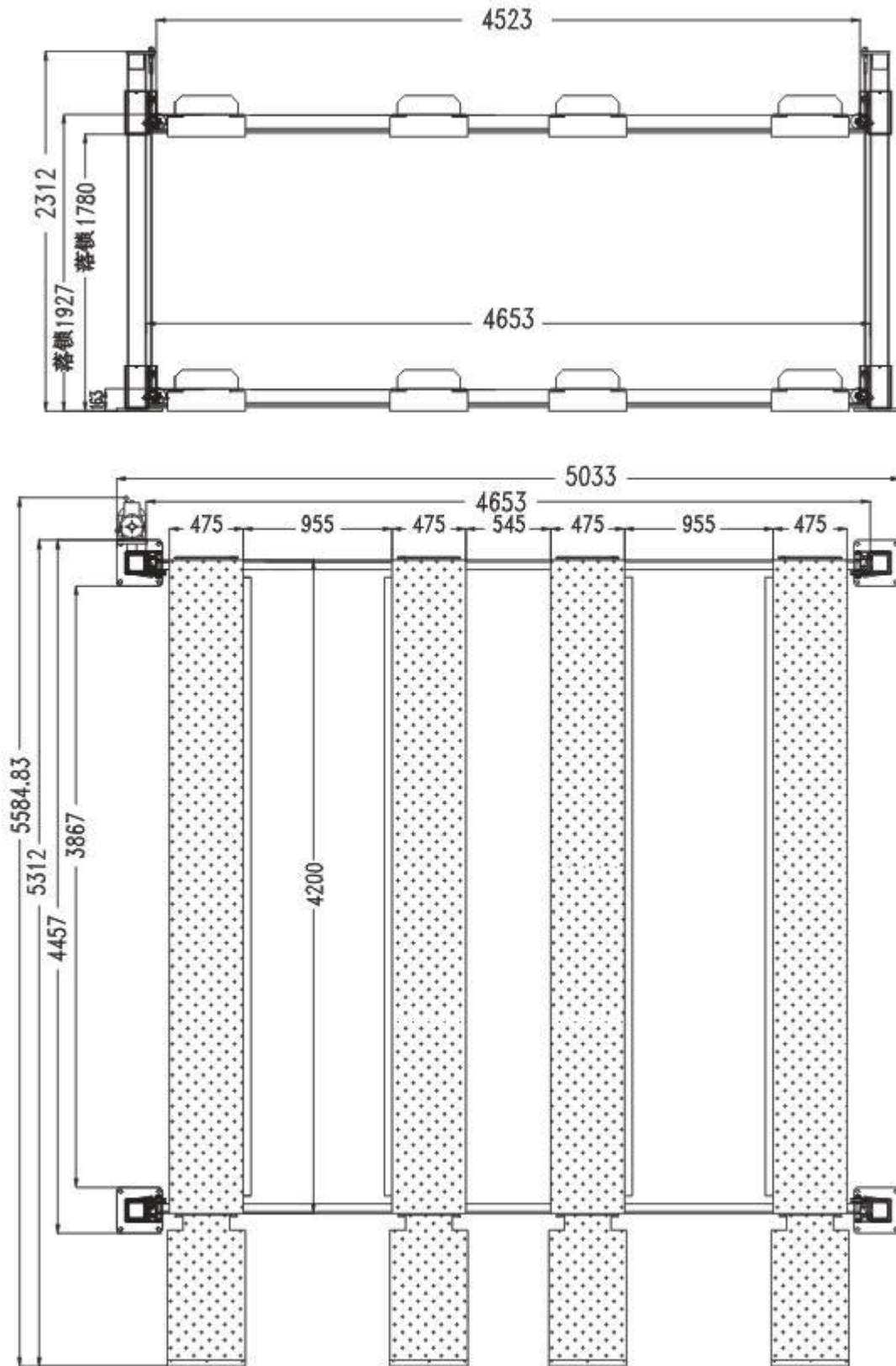
Options:

- Aluminum Drive-on approach ramps
- Aluminum fillers to create a platform between runways
- 3,500 lb hydraulic, sliding bridge jack

Specifications:

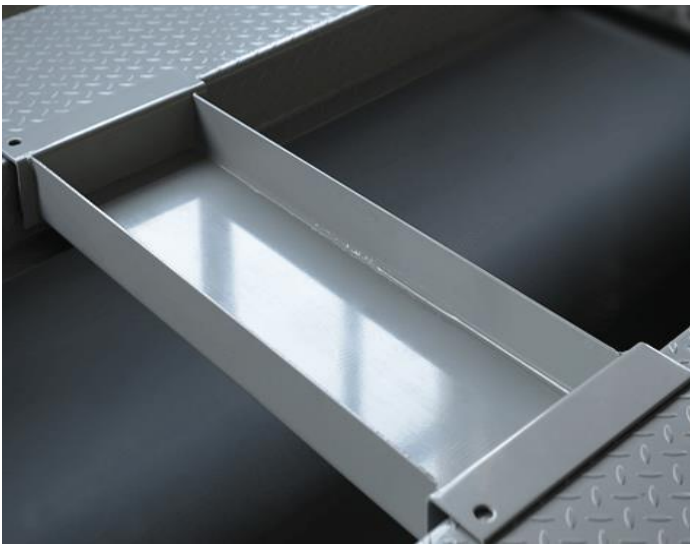
Lifting Capacity	11,000 lbs
Power unit electrical requirements (110v w/ 20 breaker. Comes standard with 110v motor unless you pre-order 220v)	110 v
Lifting time	50 sec
Shipping weight -Shipped in 2 packages (1532 lbs + 1521 lbs)	3,053 lbs
Lifting height in top position (to top of runway)	76"
Clearance under lift in top lock position (bottom of runway)	70"
Length of runway	165" (13' 9")
Length of approach ramp	48"
Height of columns (overall height)	91"
Runway width	19"
Width between runways	37"
Measurement to outside both runways	75"
Clearance between columns	183"
Overall width (with motor)	198"

Measurements in metric





Drive-on approach ramps with anti-scratch and high visibility edge



Sliding Tool/Jack tray



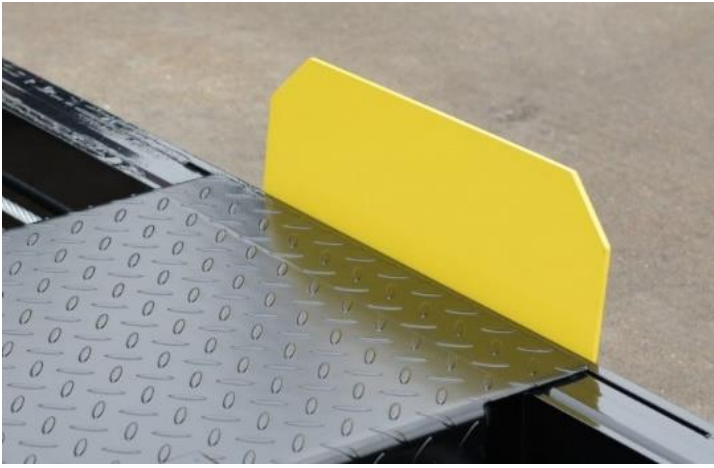
Drip Trays



Cables and pulleys under the main runway



Outside column slider design



Runway Wheel stopper



Anchor Bolts